

Innovative Railway Track Surveying System with Sensors

Puppala Surya Priya

M.Tech,

Dept of Embedded Systems,

Arjun College of Technology & Science.

Mrs.K.Sri Devi

Associate Professor,

Department of ECE

Arjun College of Technology & Science.

ABSTRACT:

This project is a cost effective yet vigorous solution to the problem of railway track geometry survey utilizing a method that is unique in the sense that while it is simple, the idea is completely novel and up till now untested. The project discusses the technical and design aspects in detail and also provides the proposed multi sensor railway track geometry surveying system. This project also presents the details of the implementation results of utilizing simple components inclusive of a GPS module, GSM Modem and MEMS based track detector assembly. In railway bridges, any time the bridge it's striking due to weather condition, floods, earthquake, cyclone, etc.

Now days system have some limitations, if the bridge or track damaged, that information goes to railway authority people, they notifies and informs to the corresponding trains it will takes more time informing those information. So to avoid delays, our proposed system will immediately notifies and informs the current train comes on the track through wireless medium. Bridge damage status is monitored by the Ultrasonic sensor and wireless modules, when the sensor not getting signal, immediately nearby wireless system notifies and alert or informs to the current train on the track. The above task can achieve through microcontrollers, GSM, MEMS. The same information can be passed to all trains coming on the track.

INTRODUCTION:

IN ALL transport systems, particularly in the case of railways, safety and reliability are highly considered. Because of the constant need to improve railway safety, the existence of objects on the tracks is considered. On non high-speed lines (standard lines), there exist critical areas where it is necessary to detect the presence of obstacles:

The level or grade crossings. A comparatively high amount of dedicated sensory systems has been installed in areas at or near level crossings to prevent collisions between trains and vehicles. In, there is recent analysis about the phenomena that may cause collisions at level crossings. On high-speed lines, there are no level crossings, but zones close to bridges or tunnels are considered to be quite critical since objects can fall on to the tracks. This can be caused by the fall of a vehicle, or a material being transported by a vehicle, onto the line. Landslides can also happen at the entrances and exits of tunnels. In these critical areas, if there is a system to detect the presence of obstacles, railway traffic can be halted, and possible accidents can be avoided. These systems sometimes generate false alarms, thus creating financial losses whenever the system detects an obstacle that does not actually exist. To avoid the generation of false alarms, it has become necessary to increase the reliability of the detection system.

Reliability is highly influenced by the design of the sensor used, the conditions in which the sensor is working, and the signal processing that is carried out by the system. This paper focuses on one of such systems to detect obstacles on high-speed lines in a reliable way. In adverse environments, there may be chances for producing false alarms. It may be due to weather conditions or solar radiations. Due to the fact that the ideal sensor does not exist, in this paper, a multisensory system is proposed so that the drawbacks of using any particular type of sensor are outweighed by the performance characteristics of the other types of sensors. The proposal is based on the barrier consisting of infrared proximity sensor and ultrasonic sensor. The reliability of the detection system is improved in three ways.

First, a robust codification scheme based on mutually orthogonal complementary sets of sequences is proposed. It simultaneously provides multiple emissions and multiple receptions, avoids interference among the emissions, and can function with a low signal-to-noise ratio. Second, the use of fuzzy logic to combine the information given by the two sensors (IR Proximity and US) is proposed. Finally, the fusion of this information by means of the Dempster–Shafer evidential theory is proposed to obtain a certainty value for the existence of objects (greater than $50 \times 50 \times 50$ cm), which may pose a risk to railway traffic.

II. DESIGNED SENSORY SYSTEM

A. Detection System

The designed sensory system is composed of two multisensory barriers, i.e., one emitting and the other receiving, which are placed at both sides of the railway. The minimum dimensions of the object to be detected are $50 \times 50 \times 50$ cm, whereas the distance between contiguous transducers is 25 cm. As a result, if an object with minimum dimensions is in the scanned area, at least two links are interrupted. The distance between emitters and receivers is 14 m, given the width of the railway line, although the distance between emitters and receivers may be sometimes greater. The required scan time is 500 ms, and if an obstacle is inside the detection area for more than 3 s, an alarm must be generated.

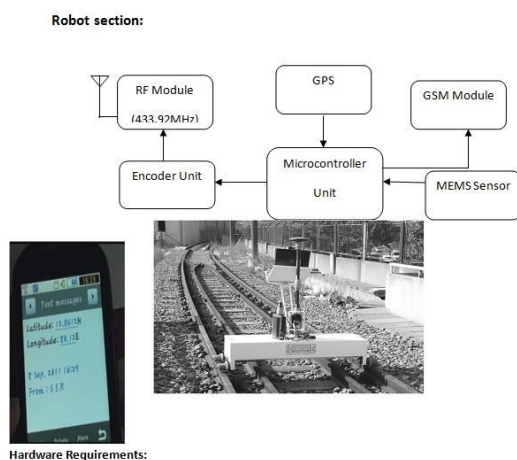


Fig.1. Block diagram of the obstacle detection system

Fig. 1 shows a proposal for an obstacle-detection system. It is divided into three processing levels: 1) the sensory modules (the multisensory barrier); 2) the individual process units; and 3) an integration module for obstacle detection and location. An IR emitter with an aperture angle of $+2^\circ$, at a distance of 14 m from a receiving barrier, can send emissions to up to five receivers, thus establishing five connections per emitter. In the case of US emitters, the aperture angle is higher; however, to have the same links and similar information in both barriers, only five links are taken into account. Due to the fact that the detection is based on link interruptions, if a sensor is not working, it could be mistaken for obstacle detection. Nevertheless, the number of interrupted links allows the system to distinguish the presence of an obstacle from a sensor that is out of order, this being of particular advantage for maintenance tasks.

B. Emission Encoding:

Since a multimode operation is carried out in the barrier (simultaneous multi emission and multi reception), it is necessary to encode every emission to avoid interferences among the different emissions and to discriminate them at the receiving block. For that reason, mutually orthogonal complementary sets of sequences have been used. More details about the encoding scheme and the adaptation of the different sensors can be found in. False alarms can be reduced using a dynamic threshold that it is dynamically adapted by considering meteorology and solar interference.

III. OBJECT VALIDATION:

It is necessary to combine data from different sources, taking into account external variables such as weather conditions or sensor degradation. For the IR barrier, weather conditions can be modeled by considering visibility, There is a direct relation between visibility and atmospheric attenuation. For the US barrier, the main factor that can influence its performance is the level of turbulence, and to assess the effect of such turbulence, it is necessary to measure the wind speed.

The data fusion has been carried out at three levels. Fig. 2 shows the data fusion architecture carried out for two consecutive influence areas. First, the detection area for each barrier has been divided into 25-cm-wide influence areas according to the receivers; therefore, if a dangerous object exists, it is detected in two consecutive influence areas. The result of this level is a measurement of the certainty of existence of objects in every influence area.

Second, a fuzzy controller (the fuzzy controller theory can be found in) has been included to weigh up the certainty of existence of objects in every influence area, taking into account the information given by the two barriers and the visibility and wind-speed values. As a result, by fusing the information from the two barriers, a final value for the certainty of existence of objects in every influence area can be obtained.

Finally, values for the certainty of the existence of objects belonging to two consecutive influence areas have been fused by means of the Dempster–Shafer evidential theory to obtain a final value for the certainty of existence of objects larger than $50 \times 50 \times 50$ cm. The first level is the Certainty of Existence of Objects in the Influence Area. Second level is the Fuzzy Controller. Third level is the Dempster - Shafter theory application.

If there is a movement of any small animals or some other unwanted factors may produce false alarms. By using Fuzzy Controller and the Dempster – Shafter theory this disadvantage is eliminated. Since the Fuzzy Controller give intermediate values, the Dempster – Shafter theory is used to produce accurate values. The accurate values are produced by the combination of several values from the Infrared proximity and Ultrasonic sensors.

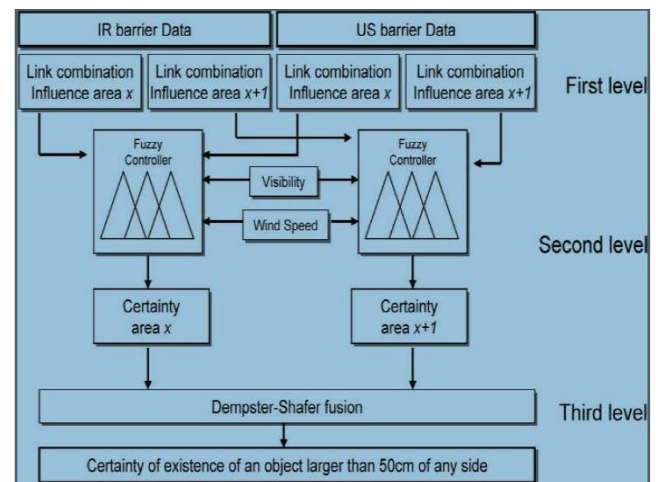


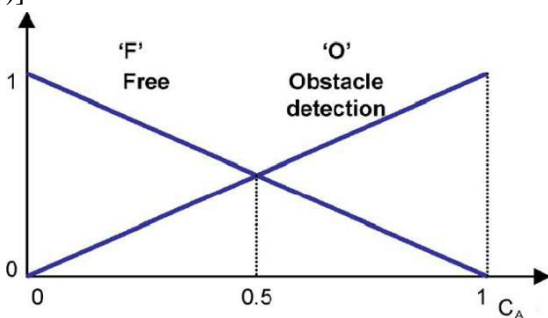
Fig.2 Data - fusion architecture for two consecutive influence areas.

A. First Level. The Certainty of Existence of Objects in the Influence Area The influence area is analysed and the value for the certainty of the existence of the objects is analysed. For each influence area several links exist. These links occur between multiple emitter and multiple receiver. If any link is interrupted in a particular area then the probability of the object to be in that area depends on the percentage of the range of the link that is placed in that particular area. To determine the link that is interrupted, the state is evaluated whether its ON or OFF state.

B. Second Level. Fuzzy Controller After the certainties of existence of objects for every zone and each barrier are available, it is necessary to combine them to have only one certainty value for every zone. Fuzzy logic introduces a concept of partial truth values that lie in between “completely true” and “completely false.” The central concept of fuzzy logic is the membership function, which numerically represents the degree of belonging of an element to a set. An element can be a member of a set at a certain degree and be a member of a different set at the same time. The proposal is to use a Mamdani fuzzy controller, which models the outputs using fuzzy sets that are easy to design. The design of the Fuzzy Controller includes some steps.

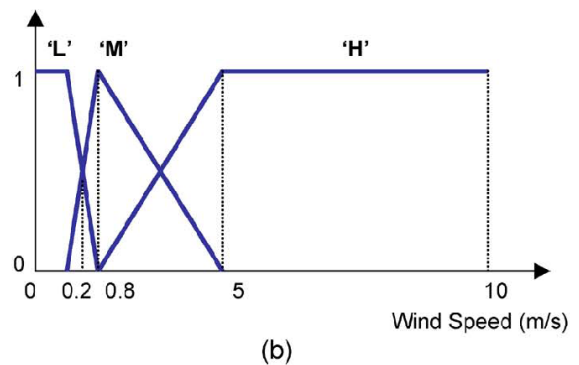
1) Data Inputs:

The fuzzy controller data inputs consist of the following sources of information. Certainty of the existence of objects for each barrier. The certainty of the existence of an object is calculated for both Infrared Proximity sensors and Ultrasonic sensors. The degree of confidence about the existence of object, taking values from zero (tracks free of objects) to one (an obstacle exists). Two fuzzy sets (F “Free” and O “Obstacle detection”) are defined to indicate the state of the link [Fig. 3(a). Wind - speed measurement. Wind speed has been considered from 0 to 10.5 m/s, as shown in Fig. 3(b). A wind speed that is higher than 10.5 m/s produces turbulences, causing the coherence time to be under the emission time; therefore, the emission becomes unrecognizable for the receiver. Three fuzzy sets (L, M, and H) are defined, and their limits are set in function of the above-commented turbulence influence on the US barrier. Visibility conditions. The confidence level of the IR barrier is adjusted according to the visibility conditions. Visibility takes values from 50 km (for very clear days) to 50 m (dense fog). Three fuzzy sets are defined (DF, C, and VC), and their limits are experimentally adjusted by using the IR barrier performance [Fig. 3(c)]



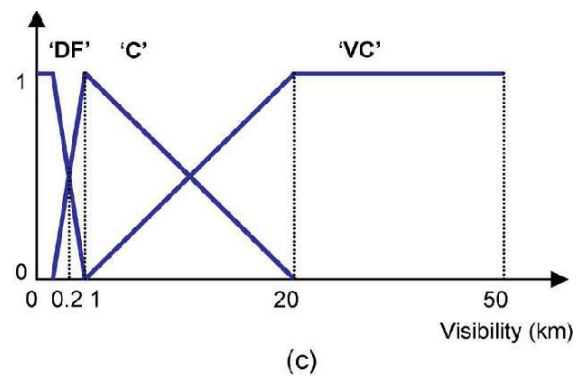
(a)

Certainty of existence of objects CA



(b)

Wind speed: L, low; M, medium; H high.



(c)

Visibility: DF, dense fog; C, clear; VC, very clear.

Fig.3. Input fuzzy set membership functions.

2) Data Outputs:

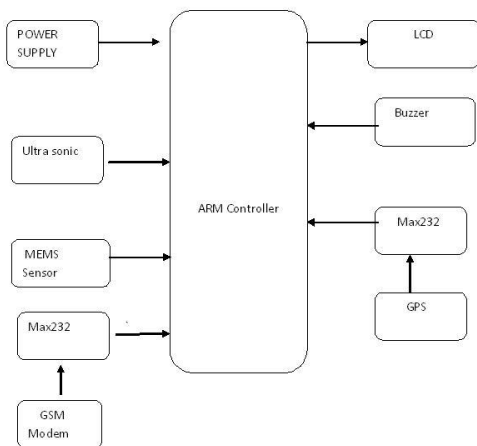
The fuzzy controller output is the modified certainty of existence of an object in the area under supervision, including the environmental effects three fuzzy sets are defined (F, O, and I). Its range takes values from zero (free of obstacles) to one (obstacle detection). The I fuzzy set is added to model the situation when the correlation values are very low (which means that obstacles can exist); however, the weather conditions invalidate the measurements (high wind speed or very low visibility).

3) Rule definition and the defuzzification process:

Finally, a set of rules is necessary to transform the variables into a fuzzy result. The knowledge is typically represented in terms of if-then rules. An example is as follows: Take A and B, then C. The if-part of the rule is called the premise, and the then part is called the consequent.

The truth value of the rule's premise describes to what degree the rule applies in a given situation. The so-called fuzzy inference mechanism is used to determine the consequent fuzzy set based on the truth value of the premise. Consequent fuzzy sets of individual rules are then combined (aggregated) into a single fuzzy set. The resulting fuzzy set is converted (de fuzzified) into a real (crisp) value, in this case indicating the fuzzy certainty of existence of objects CA.

SYSTEM ARCHITECTURE:



IMPLEMENTATION

1. Magnetic Transducer

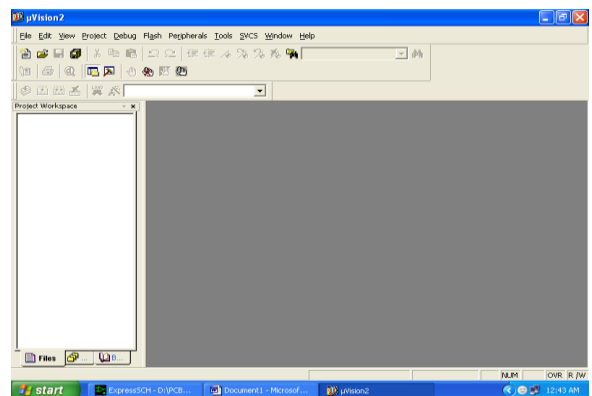
Magnetic transducers contain a magnetic circuit consisting of a iron core with a wound coil and a yoke plate, a permanent magnet and a vibrating diaphragm with a movable iron piece. The diaphragm is slightly pulled towards the top of the core by the magnet's magnetic field. When a positive AC signal is applied, the current flowing through the excitation coil produces a fluctuating magnetic field, which causes the diaphragm to vibrate up and down, thus vibrating air. Resonance amplifies vibration through resonator consisting of sound hole(s) and cavity and produces a loud sound.

2. Magnetic Buzzer (Sounder):

Buzzers like the TMB-series are magnetic audible signal devices with built-in oscillating circuits. The construction combines an oscillation circuit unit with a detection coil, a drive coil and a magnetic transducer. Transistors, resistors, diodes and other small devices act as circuit devices for driving sound generators. With the application of voltage, current flows to the drive coil on primary side and to the detection coil on the secondary side. The amplification circuit, including the transistor and the feedback circuit, causes vibration. The oscillation current excites the coil and the unit generates an AC magnetic field corresponding to an oscillation frequency. This AC magnetic field magnetizes the yoke comprising the magnetic circuit. The oscillation from the intermittent magnetization prompts the vibration diaphragm to vibrate up and down, generating buzzer sounds through the resonator.

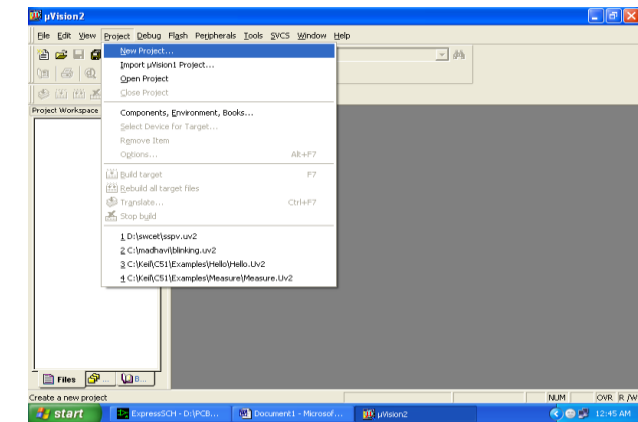
SCREEN SHOTS

1. Click on the Keil u Vision Icon on Desktop
2. The following fig will appear

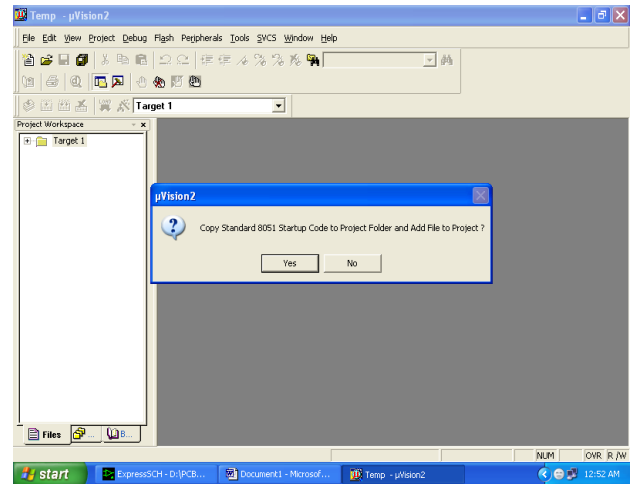


3. Click on the Project menu from the title bar
4. Then Click on New Project

9. Select lpc2148 as shown below
10. Then Click on “OK”
11. The Following fig will appear

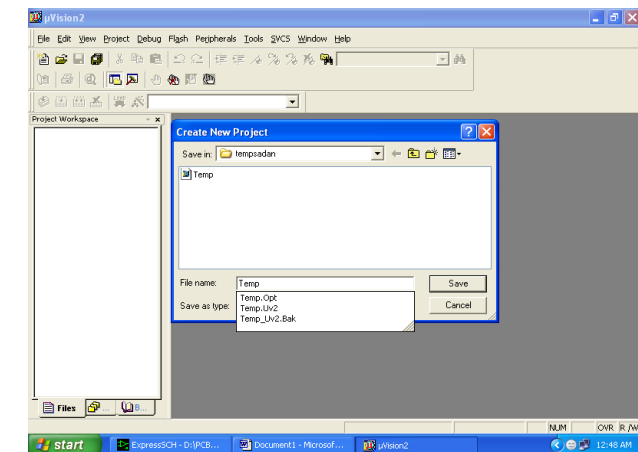


5. Save the Project by typing suitable project name with no extension in u r own folder sited in either C:\ or D:\

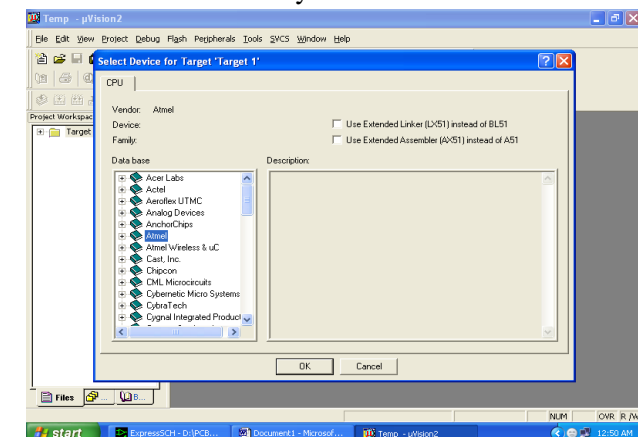


CONCLUSION:

A proposal of a multisensory system for obstacle detection on railways has been proposed, based on the complementary use of MEMS and US barriers, achieving high reliability. In this paper, apart from the use of two different sensor technologies, the reliability of the detection system has been increased due to the following reasons. First, a robust encoding scheme based on mutually orthogonal complementary sets of sequences has been implemented. It provides multi emission and multi reception, avoids interferences among the emissions, and can cope with low signal-to-noise ratios. Second, a fuzzy controller has been included to combine the information given by the two sensors (MEMS and US). It generates a value for the certainty of the existence of objects considering some external agents, such as visibility and wind speed that can affect the sensor measurements. In this project discusses the technical and design aspects in detail and also provides the proposed multi sensor railway track geometry surveying system. This project also presents the details of the implementation results of utilizing



6. Then Click on Save button above.
7. Select the component for u r project. i.e. Atmel.....
8. Click on the + Symbol beside of Atmel



simple components inclusive of a GPS module, GSM Modem and MEMS based track detector assembly.

REFERENCES:

M. J. Díaz, J. J. García, Á. Hernández, C. Losada, and E. García, “Advanced multisensorial barrier for obstacle detection,” in Proc. IEEE Int.

J. J. García, C. Losada, F. Espinosa, J. Ureña, Á. Hernández, M. Mazo, C. de Marziani, A. Jiménez, F. Álvarez, and J. A. Jiménez, “Optimal estimation techniques to reduce false alarms in railway obstacle detection,” in Proc. IEEE ICIT, Hong Kong, 2005, pp.

A. Chow, “Performance of spreading Codes for direct sequence code division multiple access (DS-CDMA),” Stanford Univ., Stanford, CA, Dec.

S. Bloom, E. Korevaar, J. Schuster, and H. Willebrand, “Understanding the performance of free-space optics [Invited],” J. Opt. Netw., vol. 2, no.6, pp. 178–200, Jun. 2003.

N. Hautiere, R. Labayrade, and D. Aubert, “Real-time disparity contrast combination for onboard estimation of the visibility distance,” IEEE Trans. Intell. Transp. Syst., vol. 7, no. 2, pp. 201–212, Jun. 2006.

H. Ying, Fuzzy Control and Modeling: Analytical Foundations and Applications. New York: Wiley-IEEE Press, Aug. 2000.

L. A. Klein, Data and Sensor Fusion: A Tool for Information Assessment and Decision Making. Bellingham, WA: SPIE, 2004.