

Grab PG, Mess & Stationary – Web Application

Ashu Kumar

Department of Information Science
and Engineering,
The National Institute of
Engineering, Mysuru.

Arijeet Pal

Department of Information Science
and Engineering,
The National Institute of
Engineering, Mysuru.

Mr. N Rajesh

Department of Information Science
and Engineering,
The National Institute of
Engineering, Mysuru.

ABSTRACT:

The intention of taking up this project is to remove all the worldly issues faced by a new immigrant such that he/she camouflages in their respective areas with minimum effort. The basic idea is to merge all solutions of the above mentioned problems in a web application. Along with rental accommodations this application is also going to provide salient features which project out to be very important in the life of user especially a student. In the current era, the web applications which are used by the user for various rental purposes like room accommodations, paying guest services, fooding services, and other day to day activities are present in different applications with their respective modules. These modules are not only complicated but also discrete which make the whole task time consuming and lethargic. In order to eradicate these problems, we need a solution such that the user is able to complete as well as modify his/her rental accommodations. Therefore the user requires a portable system which has all these features merged into a single application as his/her time saving application. The web application which we are going to introduce and demonstrate in this project report is going to be a cutting-edge in the field of rental accommodations.

I. INTRODUCTION:

Today all the service providers of pg, mess and stationary are on different platform. They all are scattered. It's a wastage of time, money, data etc. thus we came up with a solution of integrating all those things on one platform saving all those resources. It's really a good thing for the present tech friendly people.

It uses the concept of data mining and data analysis to provide the information that are relevant to the user using our website. Cloud hosting facilities are also provided for the efficient backups.

II. SYSTEM DESIGN:

When a user logs into our website, he/she has to authenticate himself/herself using the login. Both the guest user and the host can login. Login is successful only when the username and corresponding password matches otherwise a failure message is generated. On successful login the guest user can view his/her profile.

On the basis of location, search and various data mining concepts, the user will be provided with the list of paying guest, mess and stationary shops. The host can also login to update their current status. The user enters the number of rooms and his budget for the room reservation. A dynamic dropdown is generated on the basis of availability.

After the room reservation, on the basis of the location yet another dropdown is generated suggesting the restaurants & the stationary shops in the neighborhood. The user looks for the number of rooms on the basis of budget, which is stored in the database and cloud for safekeeping and future purposes. On successful search, the user requests the host to reserve the same. The search results will be provided based on the data stored in the database.

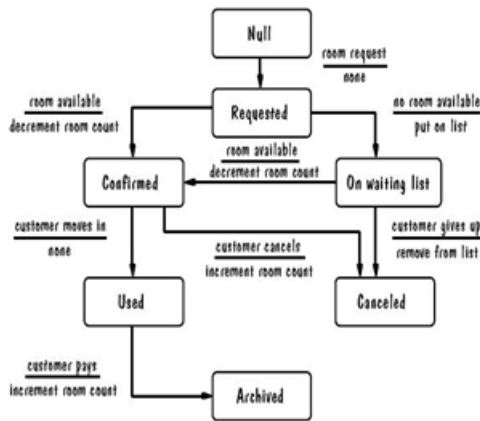


Fig.1. State Diagram

III. DATA FLOW ACTIVITY:

There are two ways to login in our application. The first one is by the use of making a customer profile. Once the user logs in he/she can reserve the room, and look for all other subsequent features provided in the application. These features include Fooding, and deciphering stationary shops in the neighborhood. The second one is by the use of creating a host profile. This will allow various hosts to launch their respective accommodations over our application on the basis of which the customers can enjoy the respective service.

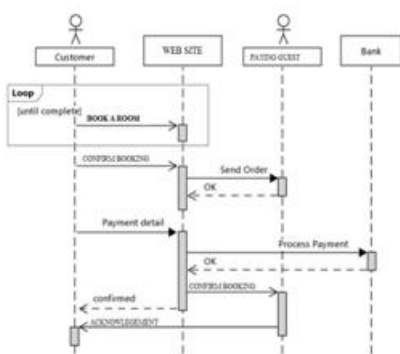


Fig 2.Data Flow Diagram

IV. ACTIVITY DIAGRAM:

The admin will manage all the database transaction activities. The students need to search and book through our website.

The PG owner can change the data about number of rooms available and the rent. Everything will be uploaded into the database and the ages will be created dynamically upon the request from the user. The user can also chat with the admin through chat feature in the home page of the website.



Fig 3.Activity Diagram

V. CONCLUSION:

Our project mainly benefits the student coming into a new city with no one to look for, for any help regarding the paying guest, mess and stationary in the area he is going to live in for the next couple of years. It is an efficient integration of 3 features that are required for the students very badly- finding the appropriate pg, locating a sophisticated mess and get a stationary shop. Our website also have the hosting facilities for the owner of the service providers where they can securely update their information without any possibilities of leakage. Thus they can earn more through our website. The website also uses global positioning system to locate accurately and precisely every address the student needs. Our website is also a source of advertisement for every student related events and resources. We will earn through commission by the service provider.

REFERENCES:

- [1] www.trivago.com
- [2] sapna book store, mysuru
- [3] www.oyo.com
- [4] www.yelp.com