

## Three Phase VSI using SVPWM Technique for Grid Connected PV System

**K.Gopi Krishna**

M-Tech Student Scholar

Department of Electrical & Electronics Engineering,  
KKR&KSR Institute of Technology & Sciences,  
Vinjanampadu, Vatticherukuru (Md)  
Guntur(DT); A.P, India.

**K.Ravi Kumar**

Assistant Professor

Department of Electrical & Electronics Engineering,  
KKR&KSR Institute of Technology & Sciences,  
vinjanampadu, Vatticherukuru (Md),  
Guntur (DT); A.P, India.

### Abstract:

This paper presents the implementation of the space vector pulse width modulation for the voltage source inverter for the grid connected applications. The space vector PWM provides the digital control by producing the gate pulses to the power electronic switches thereby, reducing the switching loss across the devices and with very less Total Harmonic Distortion (THD). MATLAB/Simulink model is developed to illustrate the proposed system. The inverter model complies with all IEEE 1547 standards varying a maximum of 5% under different testing conditions.

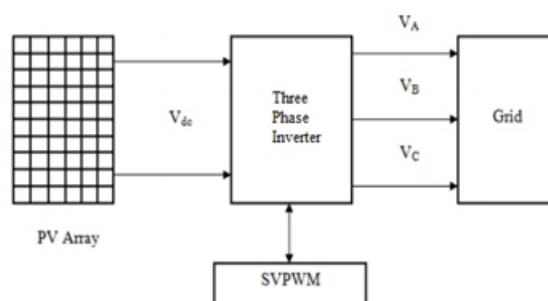
### Keywords:

Pulse width modulation; solar photovoltaic; voltage source inverter.

### I. INTRODUCTION:

With exhaustion of natural resources and accelerated demand of conventional energy, the problems of energy shortage and environmental pollution in the world have become of much importance that forced the planners and policy makers to look for alternative resources. The deregulation of electricity markets and requirement to reduce greenhouse gas emission from the conventional electric power generation make the distributed generation (DG) renewable energy systems gain a great opportunity as a new means of power generation that meet the accelerated demand for electric energy [1, 2]. Among all the various DG technologies, solar photovoltaic systems are rapidly growing in electricity markets due to the declining cost of PV modules, increasing efficiency of PV cells, manufacturing- technology enhancements and economics of scale [2, 3]. However, the increasing penetration levels of PV systems into the grid have given rise to potential problems relating to power quality (i.e. low power factor, harmonic distortion, etc.).

Thus, a grid-connected inverter is usually needed to convert this dc power into the ac power, which is then fed into the electric grid for utilization. The two major types of inverters are voltage source inverters (VSIs). The control of the voltage source inverter, because VSI can balance the grid voltage fluctuations and it produces a predetermined value of current to the grid, thereby achieving a high power factor at the output voltage. The space vector pulsewidth modulation is found to be better switching scheme among the various available switching schemes for the grid connected applications since, it has inherent advantages like less, lower THD, easier digital implementation and very low switching losses.



**Fig. 1. General diagram of proposed system.**

### II. GRID CONNECTED SOLAR PV SYSTEM:

The general grid connected SPV system is shown in Fig.2. First stage PV array or module is connected with the system which connects the input to the inverter. The 3-phase VSI is used to convert DC voltage to AC voltage and feeds the energy to the load and grid [2] through LC filter circuit. The inverter has to be controlled in order to obtain harmonic less voltage to achieve good power quality. Various PWM techniques are used to switch the inverter circuit. A PLL is used for proper synchronization

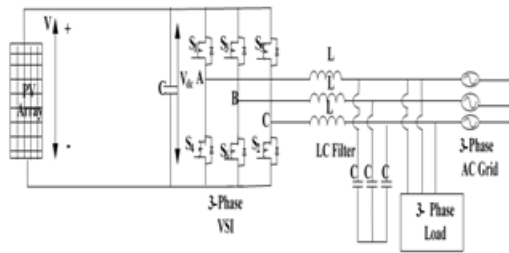


Fig.2. General Block Diagram of Grid Connected SPV system.

A. Modeling of Solar PV :

The Solar-PV cells are used to produce electricity by directly converting solar energy to electrical energy. Each solar cell is basically a p-n diode. As sunlight strikes a solar cell, the incident energy is converted directly into electrical energy without any mechanical effort. The voltage and current levels are produced from PV cells are very less, thus these PV cells are connected in series and parallel called modules and arrays to produce required voltage and current levels. The solar PV array is modeled by considering the output characteristics of PV panel which directly have relation with power converters which exists in the system. The solar PV cell is a non linear device which can be represented by a current source connected parallel with diode as shown in Fig.2. The characteristics of equivalent solar cell circuit are given in (1).

$$I_{PV} = N_p * I_{ph} - N_p * I_0 \left[ \exp\left\{ \frac{q * (V_{PV} + I_{PV} R_s)}{N_s A k T} \right\} - 1 \right] \tag{1}$$

Where  $I_{pv}$  is the PV array output current,  $V_{pv}$  is the PV array output voltage,  $I_{ph}$  is module photo current,  $R_s$  is the series resistance,  $k$  is the Boltzmann constant (138e-23 J/K),  $A$  is the ideal factor,  $N_s$  is the series no of cells and  $N_p$  is parallel number of cells.  $T$  is the operating temperature [2]. The equation (1) is simulated using MATLAB/Simulink and P-V and I-V characteristics are obtained. The operating curves shows that solar PV output power is function of solar irradiation.

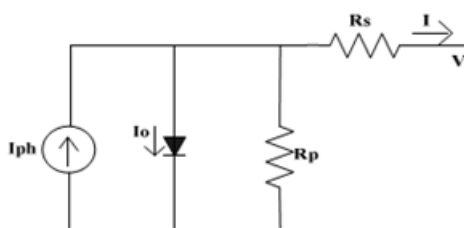


Fig.3. PV Module.

B. 3-Phase VSI and Filter:

A 3-phase VSI is used to convert DC voltage into AC voltage and feeds power to consumer loads and utility grid. The 3-phase inverters are used in grid connected SPV systems. A 3-phase inverter is a six step bridge inverter. It uses a minimum of six devices. As stated earlier, the transistor family of devices is now very widely used in inverter circuits. Presently the use of IGBT in three-phase inverter is on the rise. A capacitor connected at the input terminals tends to make the the input dc voltage constant. This capacitor also suppresses the harmonics fed back to the source. In inverter terminology, a step is defined as a change in the firing from one IGBT to the next IGBT in proper sequence. For one cycle of 360, each step would be of 60 intervals for a six step inverter.

This means that the IGBT would be gated at regular intervals of a six step inverter. There are two possible patterns of gating the switches. In one pattern, each switch conducts for 180 and in the other each switches conducts for 120. But in both these patterns gating signals are applied and removed at 60 intervals of the output voltage [3]. A LC type filter is used to provide 50Hz frequency output to consumer loads and electric grid. There are various factors which decide the selection of filter capacitor and inductor. Generally in order to eliminate the higher order harmonics, the resonant frequency of the filter should be greater than 6 times of desired output frequency [4].

III.MATHEMATICAL MODEL OF LC FILTER:

The mathematical model of LC filter circuit has been derived using state space analysis [5]. LC output filter circuit for voltage and current equations is shown in Fig.4. Kirchoff's current law is applied to the nodes a, b, c shown in Fig.4.

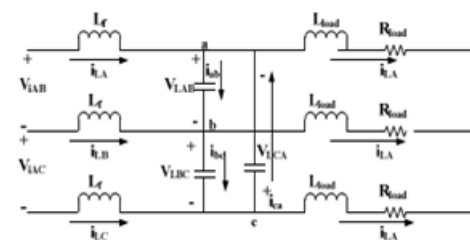


Fig.4. LC Filter Circuit.

At node a,

$$i_{LA} + i_{ca} = i_{ab} + i_{LA} \Rightarrow i_{LA} + C_f \frac{dV_{LCA}}{dt} = C_f \frac{dV_{LBC}}{dt} + i_{LB} \quad (2)$$

At node b,

$$i_{LB} + i_{ab} = i_{bc} + i_{LB} \Rightarrow i_{LB} + C_f \frac{dV_{LAB}}{dt} = C_f \frac{dV_{LBC}}{dt} + i_{LB} \quad (3)$$

At node c,

$$i_{LC} + i_{bc} = i_{ca} + i_{LC} \Rightarrow i_{LC} + C_f \frac{dV_{LBC}}{dt} = C_f \frac{dV_{LCA}}{dt} + i_{LC} \quad (4)$$

To make state equations, Kirchoff's voltage law is applied to inverter side and load side and finally state space equation for LC filter circuit is given in (5).

$$\dot{X}(t) = AX(t) + Bu(t) \quad (5)$$

$$X = \begin{bmatrix} V_L \\ I_i \\ I_L \end{bmatrix}_{9 \times 1}, \quad A = \begin{bmatrix} 0_{3 \times 3} & \frac{1}{3C_f} I_{3 \times 3} & \frac{-1}{3C_f} I_{3 \times 3} \\ \frac{-1}{L_f} I_{3 \times 3} & 0_{3 \times 3} & 0_{3 \times 3} \\ \frac{1}{L_{load}} I_{3 \times 3} & 0_{3 \times 3} & \frac{-R_{load}}{L_{load}} I_{3 \times 3} \end{bmatrix}_{9 \times 9}$$

$$B = \begin{bmatrix} 0_{3 \times 3} \\ \frac{1}{L_f} I_{3 \times 3} \\ 0_{3 \times 3} \end{bmatrix}_{9 \times 3}, \quad u = [V_i]_{3 \times 1}$$

Where  $V_L = [V_{LAB} \ V_{LBC} \ V_{LCA}]^T$ ,  $I_i = [i_{iAB} \ i_{iBC} \ i_{iCA}]^T$ ,  
 $V_i = [V_{iAB} \ V_{iBC} \ V_{iCA}]^T$ ,  $I_L = [i_{LAB} \ i_{LBC} \ i_{LCA}]^T$

(6)

#### IV. PWM TECHNIQUES FOR 3-PHASE VSI:

This section describes two types of PWM techniques used to control the 3-phase VSI of a grid connected SPV system.

##### A. Sinusoidal PWM (SPWM):

The SPWM technique is very simple and very easy to implement. This method produces a sinusoidal waveform by filtering an output pulse waveform by varying width. The required output voltage is achieved by varying the amplitude and frequency of modulating voltage. The pulse width can be changed by changing the amplitude and frequency of reference or modulating voltage. In Fig.5, modulating wave is compared with high frequency triangular wave from. The high switching frequency leads better output sinusoidal wave from. The switching state is changed when sine waveform is intersects with high frequency triangular waveform.

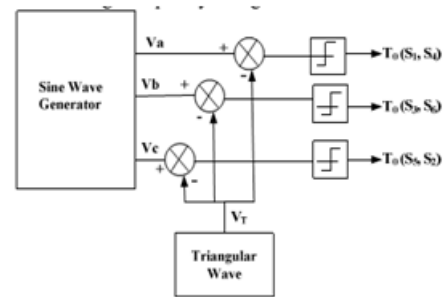


Fig.5. SPWM Control signal Generation.

In 3-phase VSI, the SPWM is achieved by three sinusoidal voltages (Va, Vb, Vc) which are 120° out of phase with each other are compared with high frequency triangular waveform (VT), and relative levels of the waveforms are used to control the switching the devices in each phase leg of the inverter.

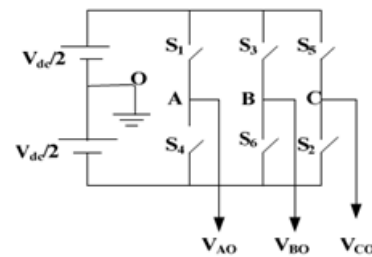


Fig.6. SPWM Inverter.

3-phase VSI having six switches (S1-S6) with each phase output is connected to middle of the each inverter leg is shown in Fig.6. The output of the comparator forms the control signal for each leg of the inverter. In one leg, two switches makes a phase and these two switches open and close in a complementary fashion. The total voltage is Vdc, therefore the each pole voltage Vao, Vbo, Vco of the inverter varies between -Vdc/2 and +Vdc/2. If the sine wave is greater than triangular wave, then upper switch is getting turned ON and lower switch is turned OFF. Based on switching states, positive or negative half DC link voltage is applied to each phase. Usually the switches are controlled in pairs (S1,S4), (S3,S6) and (S5,S2) and the logic is shown in Table I.

#### TABLE.I SWITCHING STATES:

S1 is ON when $V_a > V_T$	S4 is ON when $V_a < V_T$
S3 is ON when $V_b > V_T$	S6 is ON when $V_b < V_T$
S5 is ON when $V_c > V_T$	S2 is ON when $V_c < V_T$

### B.Space Vector Pulse Width Modulation (SVPWM):

SVPWM is employed to generate the desired output voltage vector  $V$  in d-q reference frame. For a three phase VSI there are totally eight possible switching patterns and each of them determines a voltage space vector. Fig.7 which show space vector representation, eight voltage space vectors divide the entire vector space into six sectors namely 1-6. Except two zero vectors  $V_0$  and  $V_7$ , all other active space vectors have same magnitude of  $(2/3) V_{dc}$ .

In SVPWM, the reference voltage vector should be synthesized by the adjacent vectors of the located sector in order to minimize the switching times and to minimize the current harmonics. The switching function  $S_x(x=a,b,c)$  is defined as: If  $S_x=1$ , the upper switch is ON and lower switch is OFF. If  $S_x=0$ , the upper switch is OFF while the lower switch is ON. There are 8 switch status of three phase inverter corresponding to 8 voltage space vectors as shown in Table.

### C.The eight vectors, called the basic space vectors include:

Two zero vectors  $V_0$  and  $V_7$  and six non-zero  $V_1$ - $V_6$  vectors. Two zero vectors have zero magnitude and six non-zero vectors have the same amplitude as shown in Figure 7. The angle between any adjacent two non-zero vectors is 60 degrees. • The desired reference voltage vector  $V_{ref}$  given by the current controller can be approximated by using two adjacent vectors  $V_x, V_{x+1}(x=1,2,3,4,5,6)$  and zero vectors  $V_0$  or  $V_7$  for every PWM and the period TPWM is given in equation (6)

$$T_{PWM} \cdot V_{ref} = T_1 \cdot V_x + T_2 \cdot V_{x+1} + T_0 \cdot V_0 \quad (7)$$

$$T_1 + T_2 < T_{PWM} \quad (8)$$

• TPWM is considered small with respect to the speed of change of  $V_{ref}$  that is the change of  $V_{ref}$  can be assumed to be very small within TPWM and therefore the average inverter output will be the same as the average reference voltage.

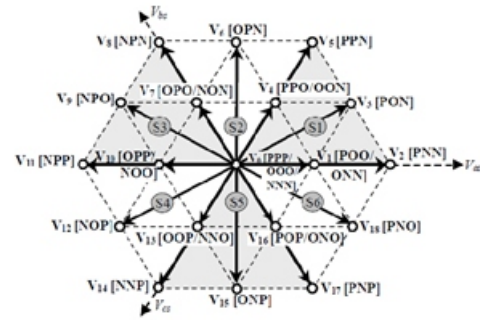


Fig.7. Voltage Space Vector Representation.

### TABLE.II. SWITCHING STATUS OF SVPWM FOR 3-PHASE VSI:

Switching State	V <sub>a</sub>	V <sub>b</sub>	V <sub>c</sub>	Space Vector	Magnitude	Angle
000	0	0	0	V <sub>0</sub>	0	0
100	1	0	0	V <sub>1</sub>	$\frac{2}{3} V_{dc}$	0
110	1	1	0	V <sub>2</sub>	$\frac{2}{3} V_{dc}$	60°
111	1	1	1	V <sub>3</sub>	$\frac{2}{3} V_{dc}$	120°
011	0	1	1	V <sub>4</sub>	$\frac{2}{3} V_{dc}$	180°
010	0	1	0	V <sub>5</sub>	$\frac{2}{3} V_{dc}$	240°
001	0	0	1	V <sub>6</sub>	$\frac{2}{3} V_{dc}$	300°
000	0	0	0	V <sub>7</sub>	0	0

### V.MATLAB/SIMULINK RESULTS:

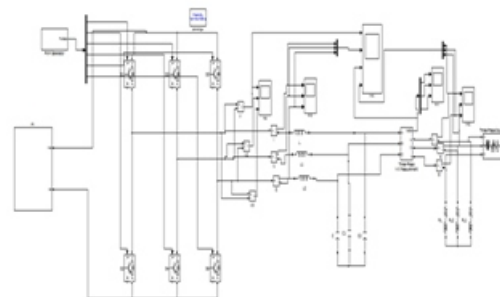


Figure 8. Matlab/Simulink Circuit diagram Grid Connected SPV system.



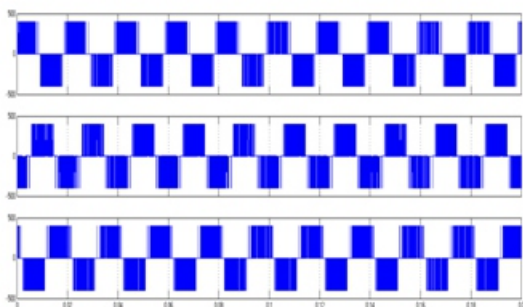


Figure.9. Inverter Output line to line Voltages ( $V_{iAB}, V_{iBC}, V_{iCA}$ ).

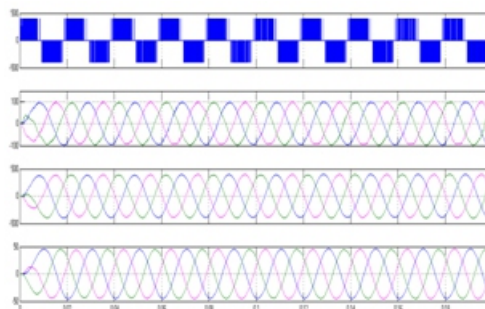


Fig.13. Inverter output line voltage, Inverter output current, Load line voltage, Load phase currents.

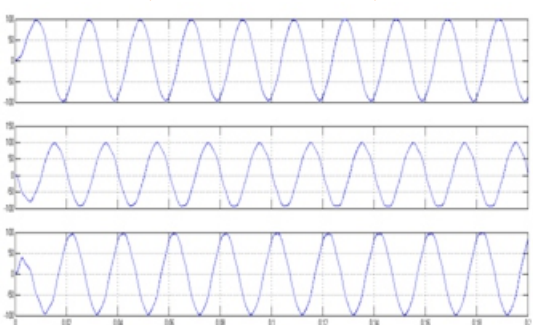


Figure 10. Inverter Output Currents ( $i_{iA}, i_{iB}, i_{iC}$ ).

Inverter output line to line voltages are given in Fig. 9. The voltages are called as  $V_{iAB}$ ,  $V_{iBC}$ ,  $V_{iCA}$ . Fig. 10 shows inverter output currents  $i_{iA}$ ,  $i_{iB}$ ,  $i_{iC}$ . Load line to line voltages and load phase currents  $i_{iLA}$ ,  $i_{iLB}$ ,  $i_{iLC}$  are given in Fig. 11 and Fig. 12. Inverter output line to line voltages ( $V_{iAB}$ ), Inverter output currents ( $i_{iABC}$ ), load line to line voltages ( $V_{LABC}$ ) and load phase currents ( $i_{iLABC}$ ) are given in Fig. 13.

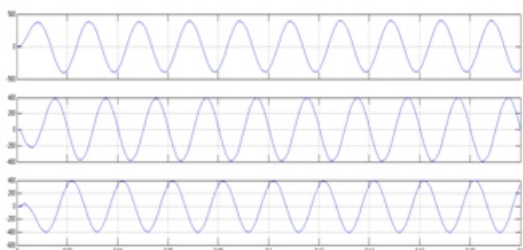


Figure 11. Load line to line voltages ( $V_{LAB}, V_{LBC}, V_{LCA}$ ).

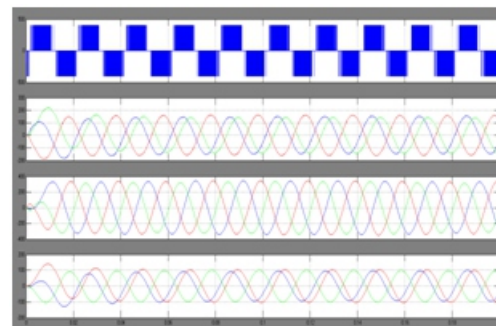


Fig.14. Inverter output line voltage, Inverter output current, Load line voltage, Load phase currents for SVPWM.

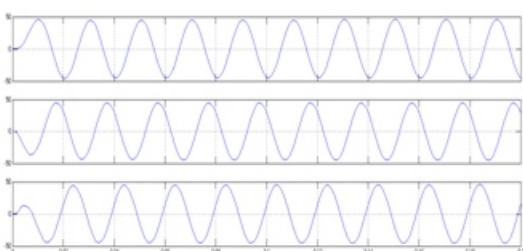


Figure 12. Load Phase Currents ( $i_{iLA}, i_{iLB}, i_{iLC}$ )

Inverter output line to line voltages ( $V_{iAB}$ ), Inverter output currents ( $i_{iABC}$ ), load line to line voltages ( $V_{LABC}$ ) and load phase currents ( $i_{iLABC}$ ) are given in Fig. 14.

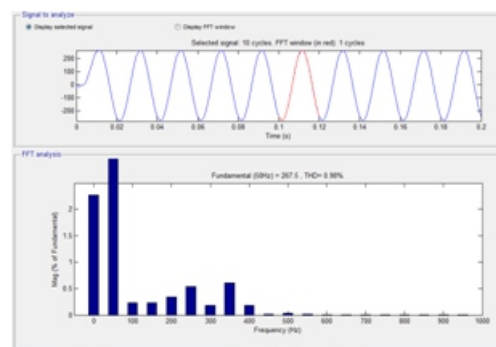


Fig.15. FFT analysis for Currents with SVPWM.

## VI. CONCLUSION:

Increasing demand on energy efficiency and power quality issues, grid connected solar PV systems is taking a good place. In this paper SPWM and SVPWM techniques have been discussed for 3-phase grid connected VSI. The LC filter circuit is used in the proposed system. This filter circuit is mathematically modeled by using state space analysis and complete state space equation is obtained. The SPWM technique is implemented and simulated on 3 phases VSI using state space model of the LC filter circuit for grid connected solar PV system. Simulation mode of the current source inverter using the space vector pulse width modulation for producing the gate signals. The results clearly show the output has very less THD and produces much lower switching losses.

## REFERENCES:

- [1] J.Y. Lee, and Y.Y. Sun, "A New SPWM Inverter with Minimum Filter Requirement," *International Journal of Electronics*, Vol. 64, No. 5, pp. 815-826, 1988.
- [2] K. Zhou and D. Wang, "Relationship Between Space-Vector Modulation and Three-Phase Carrier-Based PWM: A Comprehensive Analysis," *IEEE Transactions on Industrial Electronics*, Vol. 49, No. 1, pp. 186-196, February 2002.
- [3] A.W. Leedy, and R.M. Nelms, "Harmonic Analysis of a Space Vector PWM Inverter using the Method of Multiple Pulses," *IEEE Transactions on Industrial Electronics*, Vol. 4, pp. 1182-1187, July 2006.
- [4] A.M. Khambadkone, and J. Holtz, "Current Control in Over-modulation Range for Space Vector Modulation based Vector Controlled Induction Motor Drives," *IEEE Industrial Electronics Society*, Vol.2, pp. 1134-1339, 2000.
- [5] E. Hendawi, F. Khater, and A. Shaltout, "Analysis, Simulation and Implementation of Space Vector Pulse Width Modulation Inverter," *International Conference on Application of Electrical Engineering*, pp. 124-131, 2010.
- [6] H. Patangia and D. Gregory, "A Harmonic Reduction Scheme in SPWM," *IEEE Asia Pacific Conference on Circuits and Systems*, pp. 1737-1740, 2006.
- [7] A. Cataliotti, F. Genduso, A. Raciti, and G.R. Galluzzo, "Generalized PWM-VSI control algorithm based on a universal duty-cycle expression: Theoretical analysis, simulation results, and experimental validations," *IEEE Trans. Ind. Electron.*, vol. 54, pp. 1569 2007.
- [8] V. Blasko, "Analysis of a hybrid PWM based on modified space-vector and triangle-comparison methods", *IEEE Trans. Ind. Applicat.*, vol. 33, pp. 756 1997.
- [9] A.M. Hava and E. Ün, "Performance analysis of reduced common mode voltage PWM methods and comparison with standard PWM methods for three-phase voltage source inverters," *IEEE Trans. Power Electron.*, vol. 24, no. 1, pp. 241-252, Jan. 2009.
- [10] C. Mei, J.C. Balda, and W.P. Waite, "Cancellation of common-mode voltages for induction motor drives using active method," *IEEE Trans. on Energy Conversion*, vol. 21, no 2, pp. 380 - 386. June 2006.
- [11] S. Ogasawara, H. Ayano, and H. Akagi, "An active circuit for cancellation of common-mode voltage generated by a PWM inverter," *IEEE Trans. on Power Electron.*, vol 13, pp. 835-841, September 1998.