

Analysis of AC-AC Dynamic Voltage Restorer for Mitigation of Multiple Sag Condition

Sudeepthi Jangam

PG Scholar

Department of EEE,

Amrita Sai Institute of Science And Technology,
Paritala; Krishna (Dt); A.P, India.

Sm. Rahman

Associate Professor

Department of EEE,

Amrita Sai Institute of Science And Technology,
Paritala; Krishna (Dt); A.P, India.

Abstract:

In this paper, Dynamic Voltage Restorer using AC - AC converter has been proposed to mitigate the voltage sag/ swell and multiple sag. Dynamic Voltage Restorer (DVR) is an effective custom power devices used to protect the sensitive loads against voltage sag and swell. The single phase AC-AC converter has been employed to perform the direct AC/AC conversion. The AC voltage, which is a greater or less voltage than the line voltage. Hence it enhances the voltage restoration capability of DVR. The gating pulses for the bidirectional switch are generated using sinusoidal PWM technique and its associated circuitry. By connecting the matrix converter's input terminals on the load side and injecting the compensation voltages on the supply-side, it is possible to hold a constant input voltage, resulting in an efficient solution for compensating deep voltage sags and swells. Different solutions have been developed to protect sensitive loads against such disturbances but the DVR is considered to be the most efficient and effective solution. Its appeal includes lower cost, smaller size and its dynamic response to the disturbance. This research described DVR principles and voltage restoration methods for balanced and/or unbalanced voltage sags and swells in a distribution system.

Index Terms– Dynamic Voltage Restorer (DVR), Single Phase Matrix Converter (SPMC).

I.INTRODUCTION

Power quality issues like voltage sag, voltage swell, transients and harmonics have become major concern

in most industries today, due to the increased application of sensitive loads [1]. These power quality problems can cause malfunctioning of sensitive equipments and process interruptions. Distribution system is mainly affected by voltage sag /swell power quality issue. Such voltage sag / swell have a major impact on the performance of the microprocessor-based loads as well as the sensitive loads [2]. Dynamic Voltage Restorer (DVR) is one of the most important custom power devices, which is connected in series with the distribution system to mitigate the power quality problems [3]. It is connected in series between the supply and the critical load. The basic function of the DVR is to inject a controlled voltage into the system in order to regulate the load voltage.

The series compensation device DVR was introduced for voltage sag mitigation and has been adopted as a common solution to the problem.

The DVR's operating principle is to inject the "missing" voltage in series with the supply in order to maintain an undisturbed load voltage, Fig. 1. Since the first DVR introduced in 1994, several topologies have been developed, along with different control methods and with harmonic compensation purposes [8-9]. Most of the DVR topologies presented in the literature [10] can be classified within two categories: (i) using stored energy (batteries, capacitors, flywheel, etc.) to supply the delivered power and, (ii) having no significant internal energy storage. In the latter case, the energy is taken from the faulted grid supply. These topologies share one same specific characteristic: the dc-link. In order to eliminate the drawbacks imposed by the use of

dc-link passive elements some researchers have focused their efforts to the topologies based on ac/ac power converters, which results in reduced maintenance requirements and improved power density [11-13]. DVR topologies with energy storage are highly favored to compensate deep level voltage sags in sensitive loads within a wide power factor range. However, this type of systems has significant drawbacks regarding complexity and overall cost (energy storage and power converter).

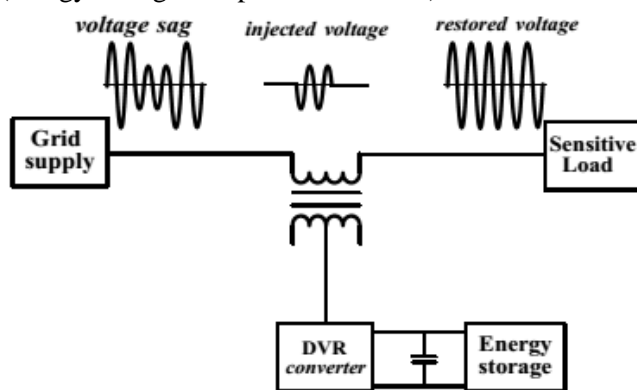


Fig.1. Principle of operation of the dynamic Voltage Restorer.

Among the existing DVR topologies with energy storage in ac form, various different types of switching power converters have been employed, being the matrix converter an attractive solution due to its operative advantages.

The advantages of these FACTS devices are their excellent in dynamic capability on mitigating disturbance. However these sag mitigation devices are based on inverter systems which consist of energy storage and power switches, this energy storage is well known for its short lifespan and its high cost.

II. DYNAMIC VOLTAGE RESTORER (DVR)

Dynamic voltage restorer (DVR) is a power device connected in series to preserve the sensitive load when there is disturbance occurs at the point of common coupling (PCC). The typical DVR consisted of injection transformer connected in series with the distribution grid, a voltage sourced inverter connected

to the secondary side of the injection transformer, passive filter and an energy storage device connected across the dc-link of the inverter circuit [3]. Fig. 2 describe the overall block diagram for a typical DVR system while a schematic diagram showing the DVR topology in a distribution network is shown in Fig. 3 The main function of DVR is to inject a voltage with the required magnitude, phase angle and frequency in series with the grid to maintain the desired load voltage when there is disturbance occur to the system. Although the main function of the DVR is to mitigate the sag and swell, additional function such as harmonic mitigation can also be applied to the device[4] Past researches on DVR are basically focused on using an inverter where it converts the supply from DC to AC and usually a DC link or energy storage is needed. In [5] a three phase DVR system has been presented utilizing direct ACAC conversion. However this paper used d-q-o transformation or Park's transformation which can only be applied in a three phase system. In [4] matrix converter has been introduced as a direct AC-AC converter. However it required additional switches since it presented a fictitious dc link. There are some papers discussed on the use of AC/DC/AC converter [6]. Due to its considerably large number of switching problem, new switching control strategy need to be investigated. There are fewer researches have been published on single phase direct AC-AC converter towards mitigating voltage sag and less used matrix converter as the AC-AC converter. However, a new topology for dynamic voltage restores without dc link has been investigated in [7], [4]. In [8] the energy storage is eliminating by replacing with the SPMC, however the switching control uses SVPM which is difficult to control. A SPMC which converts AC to AC with no DC link has been introduced in[9], though it use direct AC converter in the DVR system, it require additional switch after the passive filter. There is also a need to investigate on a strategic control topology to be employed in the proposed dynamic voltage restoration scheme. Various types of control topologies are used in the various dynamic voltage restoration techniques [10, 11].

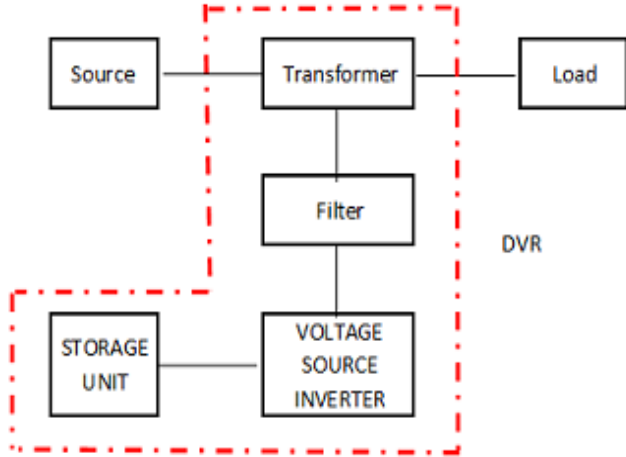


Fig. 2 the Block Diagram of Conventional DVR

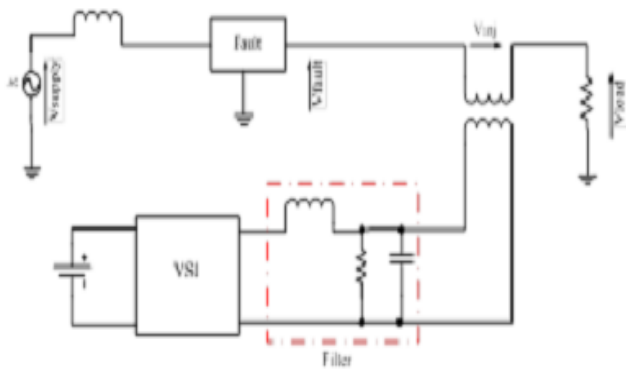


Fig. 3 Conventional DVR

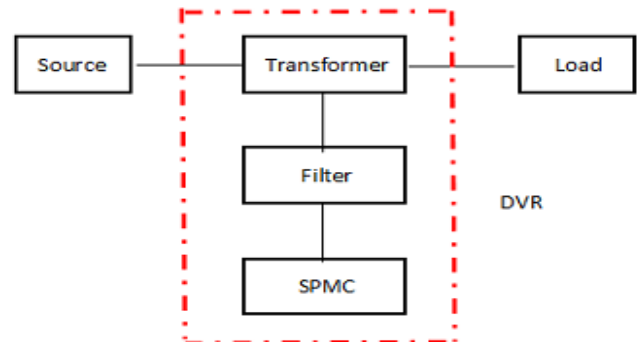


Fig. 4 Proposed Block Diagram of DVR.

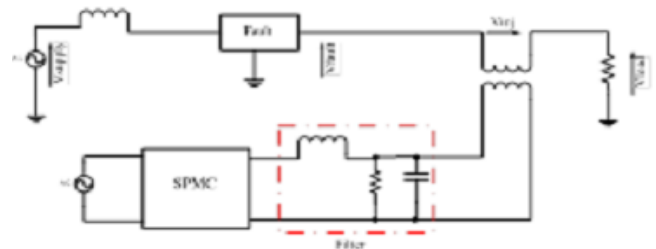


Fig. 5 Proposed Block Diagram of DVR

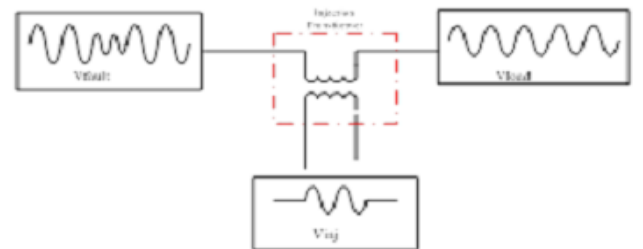


Fig. 6 Basic DVR topologies

III. DEVELOPED TOPOLOGY

Based from the existing DVR topologies, the main parts of the DVR are the voltage source converter (VSC) and the controller method. This paper proposes a single phase matrix converter (SPMC) topology as a direct AC-AC converter to eliminate the dc link or energy storage used in a typical DVR system. DC link or energy storage is well known for its high cost and short lifespan. Since the DC link is the most expensive part and therefore many researches tried to eliminate the use of this energy storage element [12]. SPMC is used to replace the voltage source inverter since the SPMC is well known for its capabilities in producing different waveforms using different switching techniques.

By applying Kirchhoff's voltage law, the system equation for Fig. 6 is obtained as follows:

$$V_L(t) = V_F(t) + V_I(t)$$

Where $V_L(t)$ denote the nominal load voltage, $V_F(t)$ for the fault voltage, and V_I for the inject voltage. Assuming pure sinusoidal waveforms for $V_L(t)$, $V_F(t)$, and $V_I(t)$, the following equations can be written;

$$V_L = V_L \sin(\omega t)$$

$$V_F = V_F \sin(\omega t)$$

$$V_I = V_I \sin(\omega t + \theta)$$

Where $V_L(t)$, $V_F(t)$, $V_I(t)$ denotes the peak values of the load, fault/supply and the injected voltage respectively.

IV. DVR with Matrix Converter

Dynamic voltage restorer (DVR) is a power-electronic converter based device capable of protecting sensitive loads from all supply-side disturbances [5]. DVR can be assumed as an external voltage source with controllable amplitude, frequency and phase connected in series with distribution feeder, through a coupling transformer. Conventional DVR uses bulky and costly electrolytic capacitors at dc-link. This results increase in systems size, weight, cost and losses and also large input and output filters are necessary for harmonic reduction. In these DVRs, one-directional power transfer has to be carried out only. To overcome the disadvantages of traditional DVR a new ac/ac converter (Matrix Converter) based DVR is introduced to compensate both voltage sag and swell [9].

This converter has the ability of ac-ac conversion with no dc link to eliminate the energy storing element. The system is mainly composed of a source, injection transformer, bypass switch, low pass filter, matrix converter and an output load. During normal operating condition, the bypass switch is in closed position and input voltage is transferred to the load. When any abnormal condition arises, matrix converter switches are turned on and provide required compensating voltage at the output. At this time the bypass switch is in off position. The output of the converter is filtered and it is injected in series with the line through a transformer. This injected voltage is added up with the sag voltage and full output is obtained at the load.

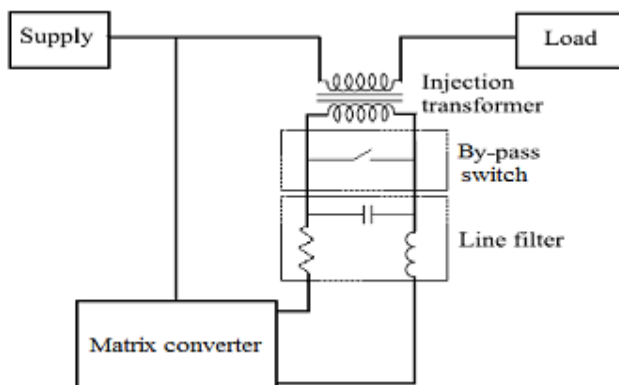


Fig. 7. Schematic diagram of DVR with matrix converter [5].

In equation (1) L, G and inj subscripts are the load, grid, and injected quantities respectively. Also, subscript k refers to the number of phases and its value is 1, 2 and 3. During voltage swell condition, a negative voltage is injected to the line. A Least Mean Square Error method [7], [10], is used to control the switching operation of matrix converter. It can compensate voltage sag, swell and flicker, because it uses bidirectional switches. There are two possible configuration ways of building the bi-directional switch; one consisting of a transistor embedded in a diode bridge arrangement while the alternative configuration consists of two anti paralleled transistors and anti-parallel diodes. The later configuration can be implemented as either a Common Emitter (CE) or a Common Collector (CC). Here Common Emitter arrangement of switch is used [11].

V. DVR CONTROLLER DESIGN

Single Phase Matrix Converter (SPMC) topology is used in the voltage source converter part in the basic DVR system. Fig.8 shows the basic SPMC connection with a single phase supply voltage connected to the IGBT which is arranged in 2x2 matrix form. The bidirectional IGBTs is used as the main switching devices with common collector bidirectional connection. This connection provides voltage blocking and current flowing through both directions. The IGBT is chose because of its well-known high speed switching capabilities and high current carrying capacities amongst researches for high-power applications [13]. Several strategies have been proposed on commutation problem which can be classified current-controlled commutation and voltage-controlled commutation [3]. In this paper the SPMC topology are used to operate as the AC-AC converter using sinusoidal pulse width modulation (SPWM) as the switching methods. A high triangular frequency as a carrier, V_c , is compared with a sinusoidal waveform V_{ref} . The crossover points are used to determine the switching instants in Fig.9 [14]. Since the SPMC topology used in this system is 50Hz input and in order to have a 50Hz output, the switching operation for switch S1a to S4b are shown in Table 1. Note that,

during the positive half cycle of the grid voltage, switches S1a and S2a are enable and switch S4a is driven by SPWM. During negative half cycle, S1b, S2b are ON, while S4b are driven by SPWM. The output from the SPMC is based from the switching pulse of the IGBT and will be fed to the injecting transformer and thus will compensate the voltage drop at the load side.

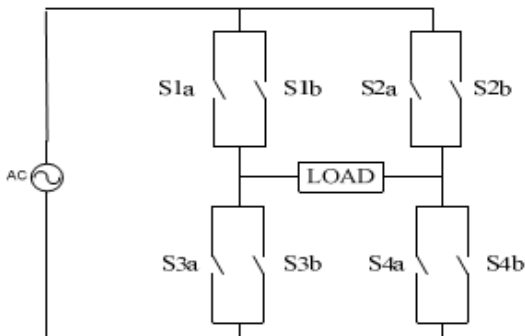


Fig.8. Basic Single Phase Matrix Converter.

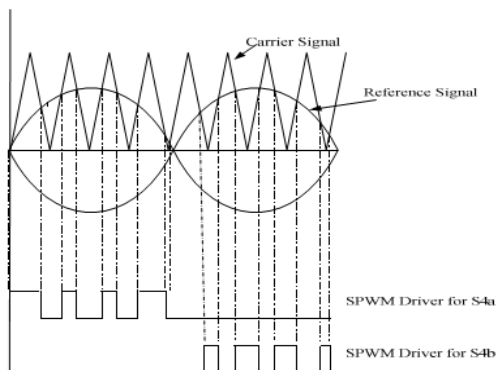


Fig.9 SPWM Signal Generations

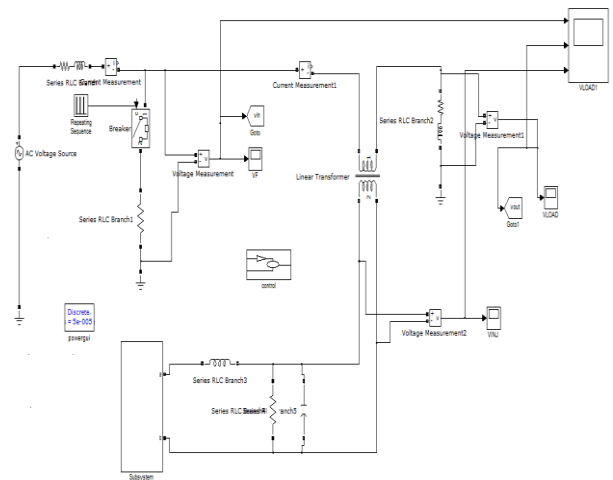
Table 1 Switching Operation

Operation		
Switches	Positive Cycle	Negative Cycle
S1a	ON	OFF
S1b	OFF	ON
S2a	ON	OFF
S2b	OFF	ON
S3a	OFF	OFF
S3b	OFF	OFF
S4a	SPWM	OFF
S4b	OFF	SPWM

VI. MATLAB/SIMULINK RESULTS

Here simulation is carried out in several cases, in that 1) Compensation of Voltage Sag for Proposed Single Phase Matrix Converter Based DVR, 2). Compensation of Voltage Swell for Proposed Single Phase Matrix Converter Based DVR.

Case 1: Compensation of Voltage Sag for Proposed Single Phase Matrix Converter Based DVR



(a) With DVR

Fig.10 Matlab/Simulink Model of Proposed Single Phase Matrix Converter Based DVR for Voltage Sag Compensation.

Fig.10 shows the Matlab/Simulink Model of Proposed Single Phase Matrix Converter Based DVR for Voltage Sag Compensation using Matlab/Simulink platform.

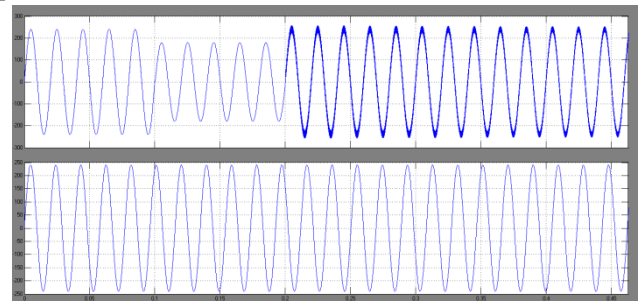


Fig.11 Source Side & Load Side Voltages

Fig.11 shows the Source Side & Load Side Voltages of Proposed Single Phase Matrix Converter Based DVR for Voltage Sag Compensation.

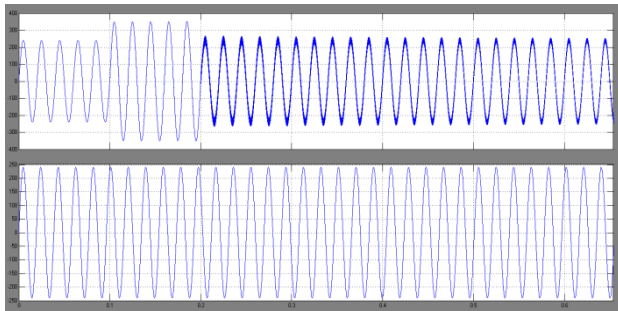


Fig.12 Source Side & Load Side Voltages

Fig.12 shows the Source Side & Load Side Voltages of Proposed Single Phase Matrix Converter Based DVR for Voltage Swell Compensation.

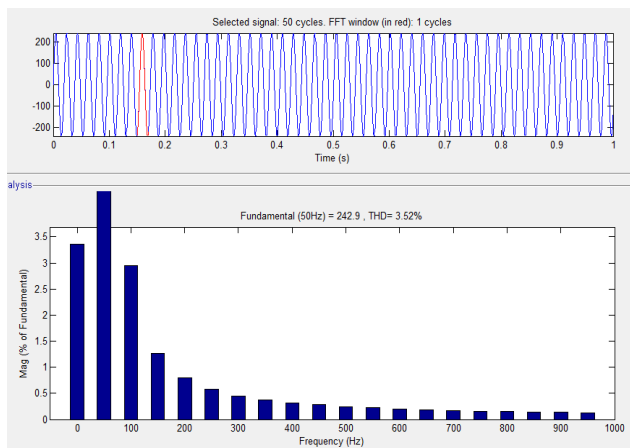


Fig.13 shows the THD analysis of voltage sag condition.

Case 2: Compensation of Voltage Multi sag for Proposed Single Phase Matrix Converter

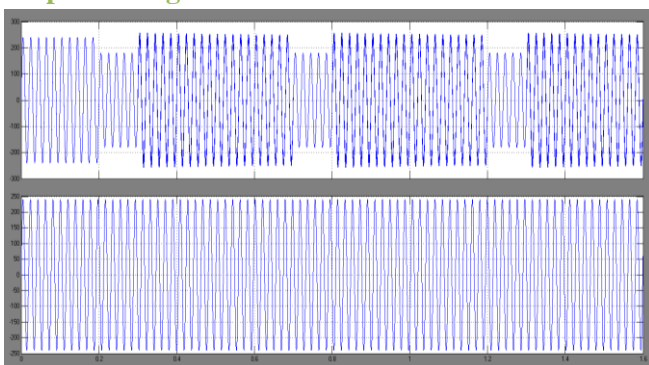


Fig.15 Source Side & Load Side Voltages

Fig.15 shows the Source Side & Load Side Voltages of Proposed Single Phase Matrix Converter Based DVR for Voltage Multi Sag Compensation.

VII.CONCLUSION

The proposed system provides output voltage which can be bucked/boosted and in-phase/out of phase with the supply voltage. Sinusoidal pulse width modulation technique has been used to generate the gate pulse for the bidirectional switches. The DVR is simulated using Matlab/Simulink. The simulation results show that the proposed DVR compensates voltage sag/ voltage swell quickly and provides efficient voltage regulation. A modeling and simulation was done using MATLAB/Simulink to observe the SPMC capability to operate as an AC-AC converter in the DVR system. The matrix converter used Sinusoidal Pulse Width Modulation (SPWM) as the switching technique and a PID to synthesis the output signal. PID is installed to reduce the harmonic distortion and thus attain a better result. Based from the simulation result achieved, it is proven that the SPMC is capable in producing the desired output voltage via injecting transformer to the load.

REFERENCES

- [1] R. Madhusudan and G. Ramamohan Rao, "Modeling and simulation of a Dynamic Voltage Restorer (DVR) for power quality problems-voltage sags and swells," in Advances in Engineering, Science and Management (ICAESM), 2012 International Conference on, 2012, pp. 442-447.
- [2] R. Omar and N. A. Rahim, "Voltage Disturbances Mitigation in Low Voltage Distribution System Using New Configuration Of Dynamic Voltage Restorer," World Applied Sciences Journal, vol. 10 (12), pp. 1480-1489, 2010.
- [3] M. Vilathgamuwa, A. A. D. Ranjith Perera, and S. S. Choi, "Performance improvement of the dynamic voltage restorer with closed-loop load voltage and current-mode control," Power Electronics, IEEE Transactions on, vol. 17, pp. 824-834, 2002.
- [4] E. Babaei and M. Frahadi Kangarlu, "Dynamic voltage restorer using direct ac/ac converter with fictitious dc link," in Power Electronic & Drive

Systems & Technologies Conference (PEDSTC), 2010
1st, 2010, pp. 361-366.

[5] R. Omar and N. A. Rahim, "Power quality improvement in low voltage distribution system using Dynamic Voltage Restorer (DVR)," in Industrial Electronics and Applications (ICIEA), 2010 the 5th IEEE Conference on, 2010, pp. 973-978.

[6] M. A. EL-Gammal, A. Y. Abou-Ghazala, and T. I. ElShennawy, "Dynamic Voltage Restorer (DVR) for Voltage Sag Mitigation," International Journal on Electrical Engineering and Informatics, vol. 3, 2011.

[7] A. Ghosh and G. Ledwich, "Compensation of distribution system voltage using DVR," Power Delivery, IEEE Transactions on, vol. 17, pp. 1030-1036, 2002.

[8] J. Perez, V. Cardenas, L. Moran, and C. Nunez, "Single-Phase AC-AC Converter Operating as a Dynamic Voltage Restorer (DVR)," in IEEE Industrial Electronics, IECON 2006 - 32nd Annual Conference on, 2006, pp. 1938-1943.

[9] J. Mahlein, J. Igney, J. Weigold, M. Braun, and O. Simon, "Matrix converter commutation strategies with and without explicit input voltage sign measurement," Industrial Electronics, IEEE Transactions on, vol. 49, pp. 407-414, 2002.

[10] Z. Idris, M. K. Hamzah, and M. F. Saidon, "Implementation of Single-Phase Matrix Converter as a Direct AC AC Converter with Commutation Strategies," in PowerElectronics Specialists Conference, 2006. PESC '06. 37th IEEE, 2006, pp. 1-7.

[11] K. Sungmin, Y. Young-Doo, and S. Seung-Ki, "PWM Method of Matrix Converter for Reducing Output Current Ripple," in Applied Power Electronics Conference and Exposition, 2009. APEC 2009. Twenty-Fourth Annual IEEE, 2009, pp. 707-713.