

Biometric Finger Print Based Bank Locker System Using Arm 7 TDMI Processor Based Lpc2148 Controller

Allammala Suman
M.Tech (VLSI-ES),
Siddhartha Institute of
Engineering and Technology.

N.Malathi Raj, M.Tech
Associate Professor,
Siddhartha Institute of
Engineering and Technology.

Dr.Dasari Subba Rao, Ph.D
HOD,
Siddhartha Institute of
Engineering and Technology.

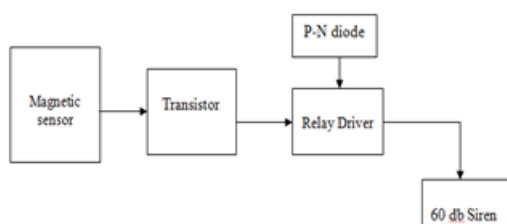
ABSTRACT:

Firstly discussing about Biometrics we are concentrating on Fingerprint scanning. For this we are using FIM 3030N high voltage module as a scanner. This module has in-built ROM, DSP and RAM. In this we can store up to 100 user's fingerprints. This module can operate in 2 modes they are Master mode and User mode. We will be using Master mode to register the fingerprints which will be stored in the ROM present on the scanner. When this module is interfaced to the LPC2148, we will be using it in user mode. In this mode we will be verifying the scanned images with the stored images. When coming to our application, to prove that the persons are authorized to enter that area they need to scan their images.

I. Literature survey:

Existing system:

This project describes a security system that can monitor an industry and home. This is a simple and useful security system and easy to install. We can place this module either at a door near home or at offices, factories or any other place where we need monitoring every minute for the purpose of security. In this project there is a sensor to monitor the door and whenever someone opens the door then a siren is activated to alert others. This can be fixed and can be activated when ever needed.



This project has a drawback that the there is no authentication to access.

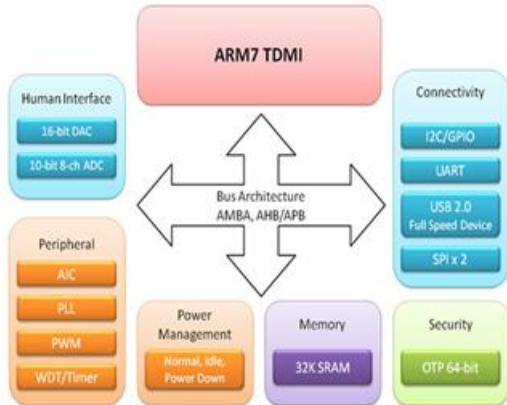
II. PROPOSED SYSTEM:

The scanner is interfaced to LPC2148 microcontroller. By using this controller we will be controlling the scanning process. After the scanning has been completed if the person is authorized, then immediately the locker will be opened by switch the relay automatically, after the work has been completed the user need to press the switch to close the door. If an unauthorized person tries to scan his image then an indication will be given by a buzzer which is interfaced to the controller. A GSM modem is also interfaced to a controller to send the SMS to authorized person whenever required. This project uses two power supplies, one is regulated 5V for modules and other one is 3.3V for LPC2148. 7805 three terminal voltage regulator is used for voltage regulation. Bridge type full wave rectifier is used to rectify the ac output of secondary of 230/12V step down transformer.

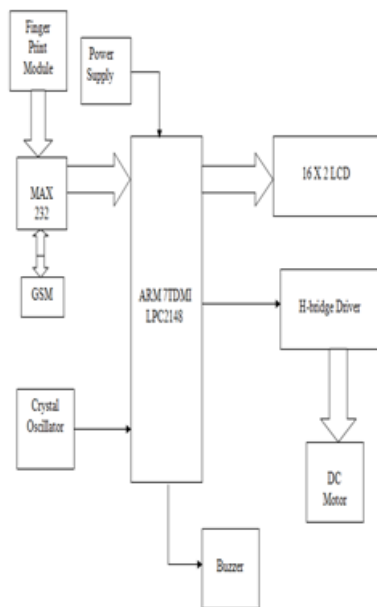
III. INTRODUCTION:

According ancient Greek scripts BIOMETRICS means study of life. Biometrics studies commonly include fingerprint, face, iris, voice, signature, and hand geometry recognition and verification. Many other modalities are in various stages of development and assessment. Among these available biometric traits Finger Print proves to be one of the best traits providing good mismatch ratio and also reliable. The present scenario to operate a bank locker is with locks which are having keys. By this we can't say that we are going to provide good security to our lockers.

To provide perfect security and to make our work more easily we are taking the help of two different technologies viz. EMBEDDED SYSTEMS and BIOMETRICS.



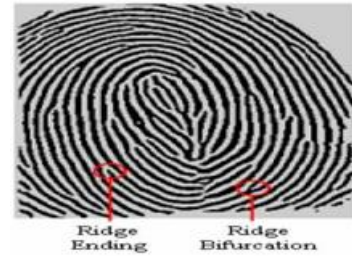
Block diagram:



IV. HARD WARE MODULES FINGERPRINT SCANNERS:

The basic information about fingerprint is that it is unique for each person. Even a twin brother will not have the same fingerprint. Thus each fingerprint is used to store a unique identifiable piece of information. The uniqueness in each fingerprint is due to the peculiar genetic code of DNA in each person. This code causes the formation of a different pattern of our fingerprint. A fingerprint consists of ridges and valleys. They together provide friction for the skin.

The main identification of the skin is based upon the minutiae, which actually is the location and direction of the ridge endings and splits along a ridge path.



LCD:

LCD stands for Liquid Crystal Display. LCD is finding wide spread use replacing LEDs (seven segment LEDs or other multi segment LEDs) because of the following reasons:

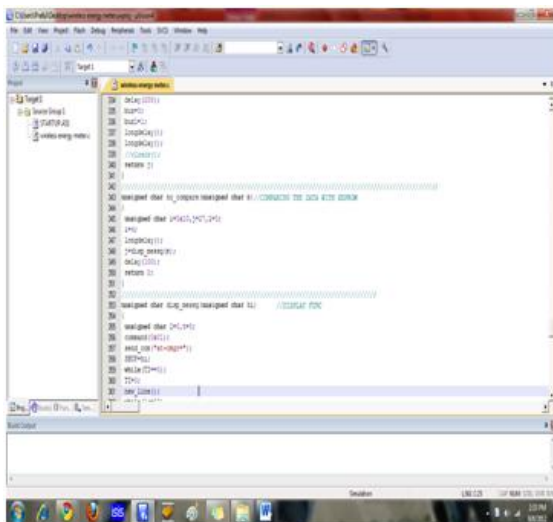
Command	RS	RW	D7	D6	D5	D4	D3	D2	D1	D0	Execution Time
Clear display	0	0	0	0	0	0	0	0	0	1	1.64ms
Cursor home	0	0	0	0	0	0	0	0	0	1	1.64ms
Entry mode set	0	0	0	0	0	0	0	0	1	UD	40us
Display on/off control	0	0	0	0	0	0	1	D	U	B	40us
Cursor Display Shift	0	0	0	0	0	1	D	C	R	L	40us
Function set	0	0	0	0	1	DL	N	F	x	x	40us
Set CGRAM address	0	0	0	1	CGRAM address					40us	
Set DDRAM address	0	0	1	DDRAM address					40us		
Read "BUSY" flag (BF)	0	1	BF	DDRAM address					-		
Write to CGRAM or DDRAM	1	0	D7	D6	D5	D4	D3	D2	D1	D0	40us
Read from CGRAM or DDRAM	1	1	D7	D6	D5	D4	D3	D2	D1	D0	40us

These components are "specialized" for being used with the microcontrollers, which means that they cannot be activated by standard IC circuits. They are used for writing different messages on a miniature LCD.



V. SOFTWARE DETAILS:

Keil compiler is a software used where the machine language code is written and compiled. After compilation, the machine source code is converted into hex code which is to be dumped into the microcontroller for further processing. Keil compiler also supports C language code.



Flash Magic:

Flash Magic is a tool which is used to program hex code in EEPROM of micro-controller. It is a freeware tool. It only supports the micro-controller of Philips and NXP. It can burn a hex code into that controller which supports ISP (in system programming) feature. Flash magic supports several chips like ARM Cortex M0, M3, M4, ARM7 and 8051.



VI. ADVANTAGES:

- ⊙ Sophisticated security
- ⊙ No manual errors
- ⊙ No false intrusion
- ⊙ Need not remember any password
- ⊙ Others cannot steel the user's entry key

VII. APPLICATIONS:

- ⊙ Industries are using finger print modems for access control, Stores, attendance recording, and machine operation authentication.
- ⊙ Banks and ATM
- ⊙ Voter Identification and electoral enrollment
- ⊙ Personal Computers
- ⊙ Automotives and high end cars

VIII. CONCLUSION:

In this project work, we have studied and implemented a complete working model using a LPC2148. The programming and interfacing of microcontroller has been mastered during the implementation. This work includes the study of FINGERPRINT module.

IX. REFERENCES:

1. Biometric. Available: <http://en.wikipedia.org/wiki/Biometric>
2. LM3s6965 Datasheet Available: <http://www.ti.com/product/lm3s6965>
3. SFM3520-OP. Available: <http://www.supremainc.com/eng/Datasheet/UF-SFM3520OP-Datasheet-v1.0.pdf>

4. Power over Ethernet-. Available:

<http://en.wikipedia.org/wiki/Power-over-Ethernet>

5. CGI Available:

<http://en.wikipedia.org/wiki/Common-Gateway-Interface>

6. Daogang Peng, Hao Zhang, Kai Zhang, Hui Li, Fei Xia Published a paper titled "Research and Development of the Remote I/O Data Acquisition System Based on Embedded ARM Platform" 2009 IEEE.

7. Jiangchun Xu, Jiande Wu, Yuhui Li Published a paper titled "A Networks Data Collection Embedded System Based on ARM-uCLinux" 2009 IEEE.

8. Hua Fang, Ming Tang, Lian Peng "Wireless data acquisition system based on ARM" 2011 IEEE.

9. Gan-ping Li "Design of an Embedded Control and Acquisition System for Industrial Local Area Networks Based on ARM" 2010 IEEE.

Author's Details:

Allammala Suman,

M.Tech (VLSI-ES), Siddhartha Institute of Engineering and Technology.

N.Malathi Raj,

M.Tech (VLSI), TKR College Of Engineering And Technology, B.Tech From Sreenidhi Institute Of Engineering And Technology, Life Time Member Of ISTE, Associate Professor, Siddhartha Institute Of Engineering And Technology



Dr. D. Subba Rao,

is a proficient Ph.D person in the research area of Image Processing from Vel-Tech University, Chennai along with initial degrees of Bachelor of Technology

in Electronics and Communication Engineering (ECE) from Dr. S G I E T, Markapur and Master of Technology in Embedded Systems from SRM University, Chennai. He has 13 years of teaching experience and has published 12 Papers in International Journals, 2 Papers in National Journals and has been noted under 4 International Conferences. He has a fellowship of The Institution of Electronics and Telecommunication Engineers (IETE) along with a Life time membership of Indian Society for Technical Education (ISTE). He is currently bounded as an Associate Professor and is being chaired as Head of the Department for Electronics and Communication Engineering discipline at Siddhartha Institute of Engineering and Technology, Ibrahimpatnam, Hyderabad.